

# MUSEUM MAP



Orca (Killer Whale)  
*Orcinus orca*  
Length: 4.02 m

INFORMATION FOR  
YOUR VISIT



# OXFORD UNIVERSITY MUSEUM OF NATURAL HISTORY

**Exhibition Gallery**  
Our series of special exhibitions on contemporary research.

**British birds**  
Discover Britain's incredible birdlife, from warblers to wetland fowl.

**History of life**  
Starting here, the outer gallery is a whistlestop tour of 4 billion years of life.

**Evolution**  
Discover evolution: how organisms adapt to a changing planet.

**Modern animals**  
Learn about animal species we share our planet with today.

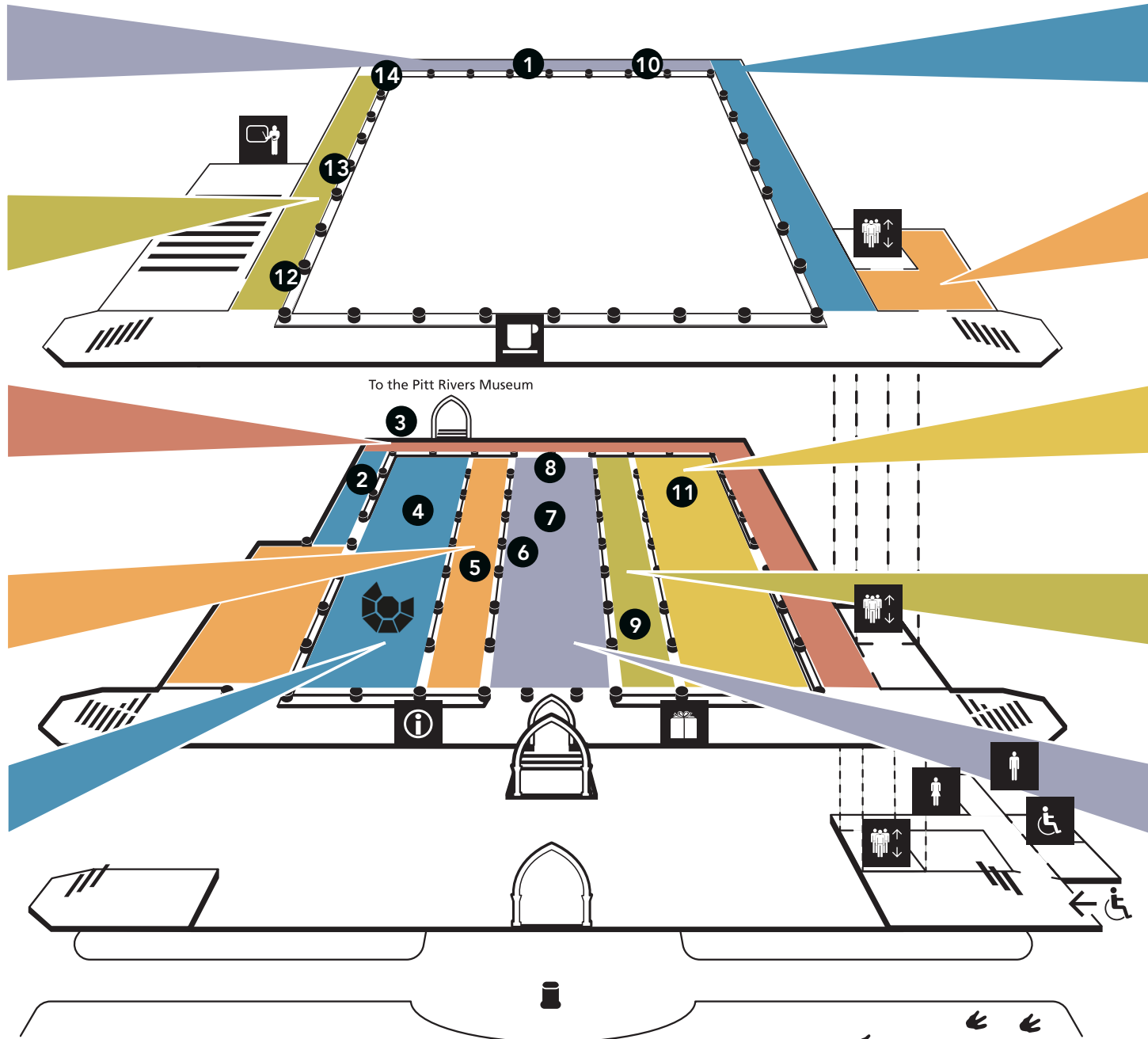
**Insects**  
Pollinators or parasites? Find out more about these incredibly diverse animals.

**Ellen Hope Gallery**  
Visit our newly renovated Ellen Hope Gallery, dedicated to British insects.

**Dinosaurs & reptiles**  
Meet extinct animals and see fossils found in Oxfordshire.

**Earth**  
What can we learn about Earth from rocks and minerals beneath our feet?

**Biodiversity**  
Marvel at the variety of life and find out how organisms are connected.

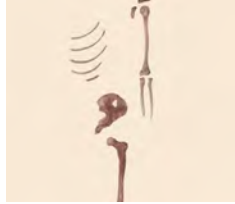


# MUSEUM HIGHLIGHTS

1 *Megalosaurus* jaw



2 'Red Lady' of Paviland



3 Trilobite wall



4 Skeleton Parade



5 Whale skeletons



6 Japanese Spider Crab



7 *Tyrannosaurus rex*



8 Darwin statue



9 Nantan meteorite



10 Anning's *Ichthyosaurus*



11 Out of the Deep



12 The Oxford Dodo



## Audioguides

Our online audioguides are available in nine languages:

English, 官话, Italiano, Español, Français, Deutsch, Polski, Português, عربي

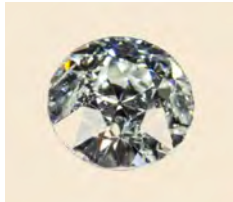
Scan below...



13 Red Kite



14 Precious stones



Oxford University Museum of Natural History  
Parks Road  
Oxford  
OX1 3PW  
01865 272950  
[www.oumnh.ox.ac.uk](http://www.oumnh.ox.ac.uk)  
[info@oum.ox.ac.uk](mailto:info@oum.ox.ac.uk)



@morethanadodo